

Enterprise Risk Management and Cyber Risk

Perspectives from Solar Winds & Colonial Pipeline
Events

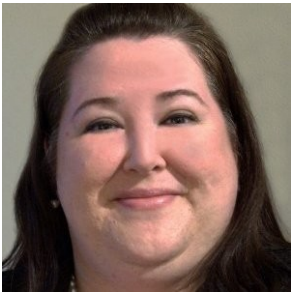
July 15, 2021





With us today

Kate Sylvis



Marianne Bailey



John Eckenrode



Varun Malhotra

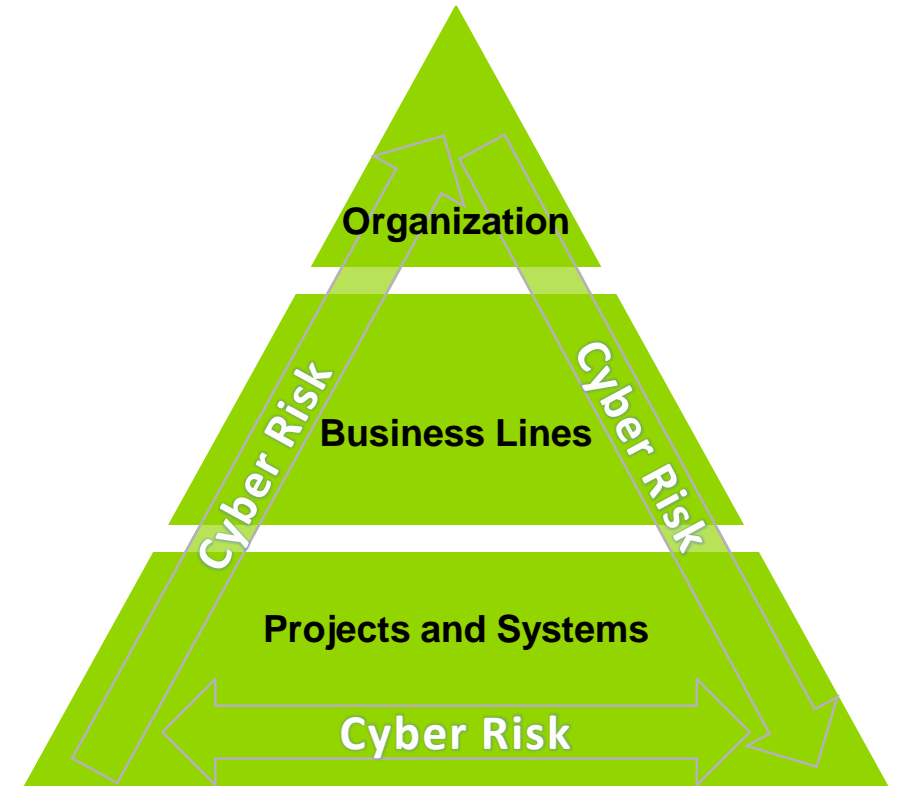


- 1. Evolution of ERM and Cybersecurity**
2. Recent Events and Trends
- 3. Risk Profile Implications**
4. Downstream Impact
- 5. Best Practices & Lessons Learned**

Cyber Resilience integrates cybersecurity with business and mission information to enable organizations to make informed, prioritized cyber risk decisions that support strategic and operational business objectives.

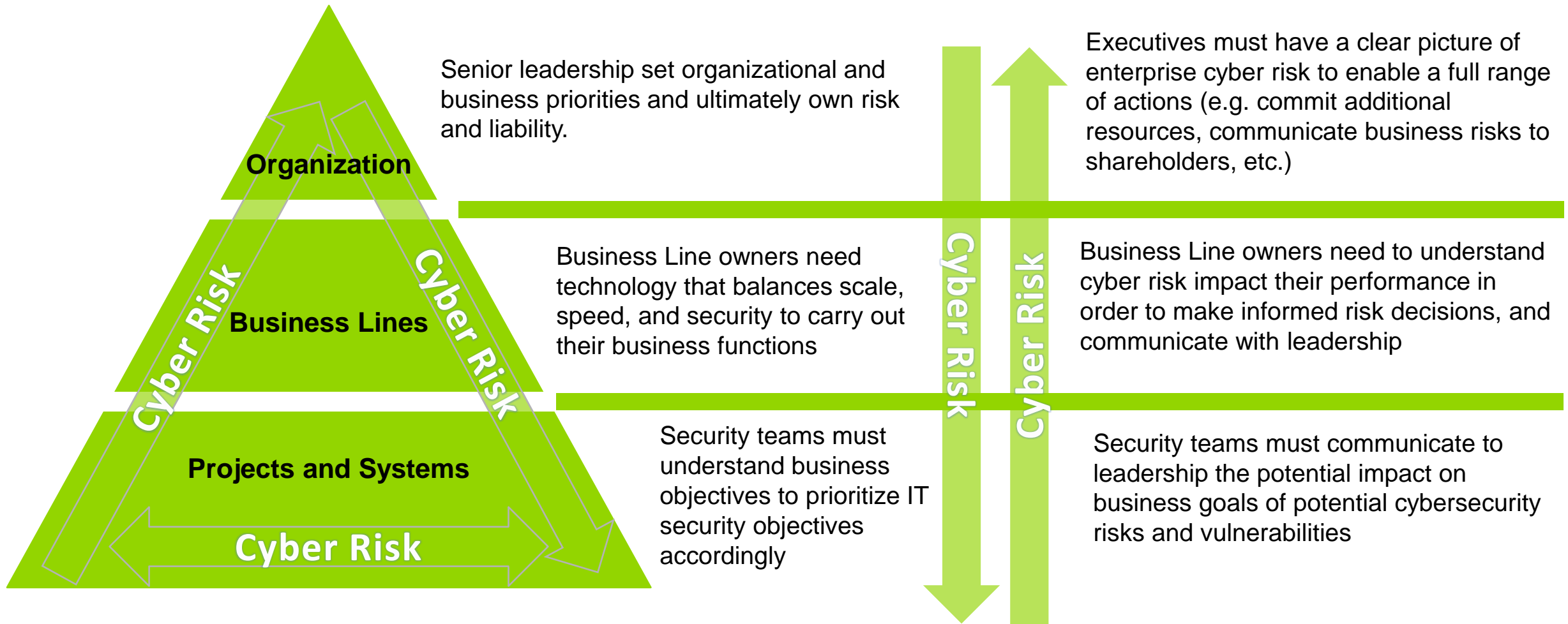


- In many organizations, Risk Management occurs in silos and is not conducted holistically
- Cybersecurity activities tend to be applied universally across the entire enterprise from a cyber hygiene perspective



The Cyber Resilience communications model drives tier - specific messaging to improve awareness, and allow informed and prioritized risk and resource decisions to occur at all levels of the organization

Cyber Resilience requires communication of focused, actionable risk data to all levels of the organization



Questions

Kate Sylvis

Enterprise Risk Management Solution

Leader

ksylvis@guidehouse.com

(571) 246-1985

Marianne Bailey

Cybersecurity Solution Leader

mbailey@guidehouse.com

(202) 742-0531

John Eckenrode

Director – Cybersecurity Solutions

jeckenrode@guidehouse.com

(703) 980-4938



©2021 Guidehouse Inc. All rights reserved. This content is for general information purposes only, and should not be used as a substitute for consultation with professional advisors.